

→ SET OF WEBPARTS

MatchPoint Web Parts empower SharePoint developers to implement even complex applications with no code.

→ SERVICE LAYER AND API

MatchPoint addresses most problems in SharePoint development with its unique integrated toolset. A robust service layer provides generic models and concepts across SharePoint applications.

→ TOP 5 REASONS WHY YOU SHOULD USE MATCHPOINT

1. On average, MatchPoint customers save time and money by reducing their overall SharePoint project development time by 30%.
2. Empower more members of your project teams to build complex SharePoint solutions without developer expertise.
3. Set up a hassle-free development environment by centralizing application, site and configuration management over your entire SharePoint farm.
4. Standardize your SharePoint service portfolio and enable configuration and code reuse across SharePoint applications.
5. Increase information quality and deliver personalized, relevant content to create a fantastic user experience.



- ✓ Increase Your Development Efficiency
- ✓ Create a Great User Experience
- ✓ Easily Connect to Business Data

	Developer Tools	Information Management	Application Management
Functional Benefits	CONFIGURE, NOT CODE	IMPROVE INFORMATION GOVERNANCE	CENTRALIZE MANAGEMENT AND IMPROVE SELF-SERVICE
Cost Benefits	INCREASE DEVELOPMENT EFFICIENCY, IMMEDIATE ROI	REDUCE CONTENT MANAGEMENT AND GOVERNANCE COST	OPTIMIZE CHANGE MANAGEMENT PROCESS
Strategic Benefits	MINIMIZE PROJECT RISK AND COMPLEXITY	GLOBAL CONTEXT ACROSS APPLICATIONS AND PROCESSES	ALIGN PLATFORM GROWTH WITH SHAREPOINT MATURITY MODEL

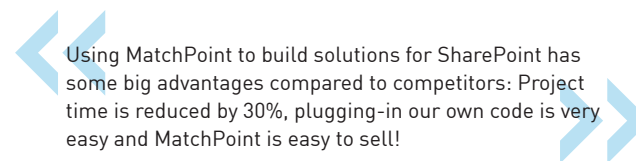
Book your MatchPoint demo at www.colygon.com/demo



HEADQUARTER
Colygon AG
Centralbahnstrasse 7
CH-4051 Basel
Phone +41 61 206 86 68

US-OFFICE
Colygon
145 North 2nd Street
USA-Philadelphia, PA 19106
Phone +1 267 254 52 42

www.colygon.com
info@colygon.com



Using MatchPoint to build solutions for SharePoint has some big advantages compared to competitors: Project time is reduced by 30%, plugging-in our own code is very easy and MatchPoint is easy to sell!

Kjetil Hovding, Team Manager SharePoint,
Crayon, Norway



Developer Tools

→ GENERIC CONFIGURABLE COMPONENTS

Easy to learn and maintain, flexible use for all types of solutions

→ EXTENSIBLE BASE CLASSES

Solid foundation to expand functionality, create own components using the MatchPoint API

→ CENTRALIZED CONFIGURATION FRAMEWORK

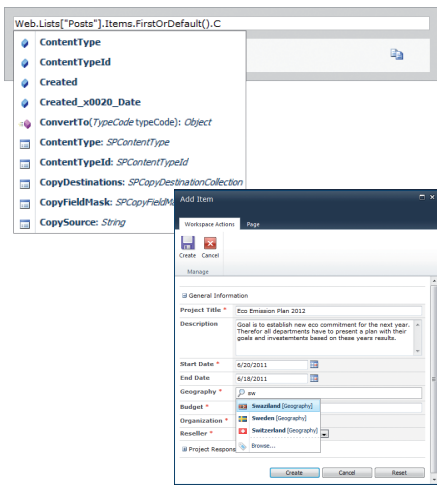
More efficient development, increased code control, more efficient deployment

→ EXPRESSION ENGINE

Direct access to the SharePoint object model, flexible parametrization without compilation

→ WEB PART CONNECTION FRAMEWORK

Combine all components according to your requirements, create dynamic interfaces with related components



Parametrize your forms using expressions

Information Management

→ TAXONOMY MANAGEMENT

Reduced management effort, more efficient information governance, improved lifecycle management

→ TAGGING FEATURES

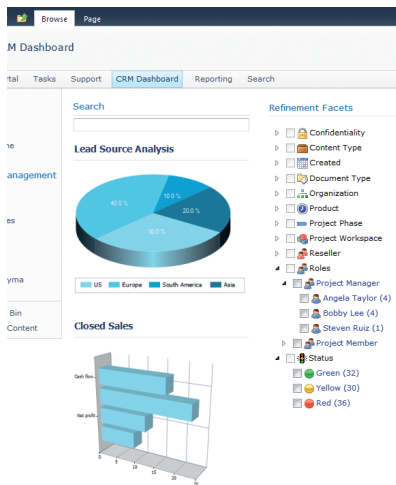
Reduced tagging effort, higher information quality

→ FARM-WIDE AGGREGATION

Build comprehensive management dashboards, advanced filtering and personalization, more efficient information use, increased transparency

→ FORMS AND WORKFLOWS

Improved list management, configurable user interfaces, better process support



Visualize your content in interactive dashboards

Application Management

→ CENTRALIZED CONFIGURATION MANAGEMENT

More efficient deployment and change management, less reprovisioning

→ COMMON SERVICE LAYER

Cross-application configuration reuse, global governance rules and role management

→ SELF-SITE PROVISIONING FRAMEWORK

Controlled site governance, increased user autonomy, form-based workspace creation and management

→ DATA PROVIDERS, DATA ADAPTERS AND ENTITY MODEL

Efficient access to any type of content, configurable application logic, configurable user interface

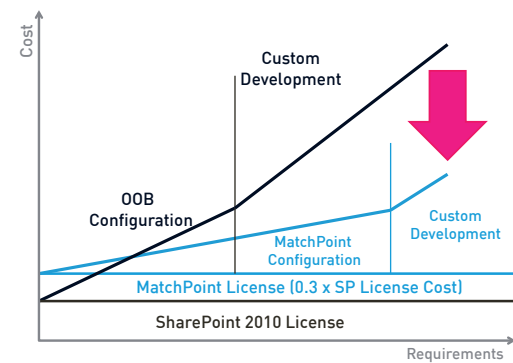
→ AWARD WINNING SOFTWARE

Gartner has granted MatchPoint the "Cool Vendor" award for its innovative technology.



→ MATCHPOINT EDITIONS

MatchPoint is available in three editions, Workgroup, Application and Enterprise, designed to meet the needs of any organization, from small teams to global enterprises. You can start small and scale up and out as required – ask us for current pricing information.



Be more efficient in SharePoint development

MatchPoint really is the perfect framework for SharePoint projects: It facilitates development processes for our own employees and increases their productivity and at the same time provides our customers with a solution that makes their platform easier to manage.

Gorm Priem, Director
ProActive, Denmark

Colygon's SharePoint Application Framework MatchPoint will not only increase the quality of our Sharepoint solutions, but also strongly enhance SharePoint functionality and very elegantly bypass its limits.

Petri Reiman,
Director of Software Solutions & Services,
Affecto, Finland